



# GAT MONTHLY MEMBERSHIP PROGRESS REPORT

Results as of: 4/30/2022

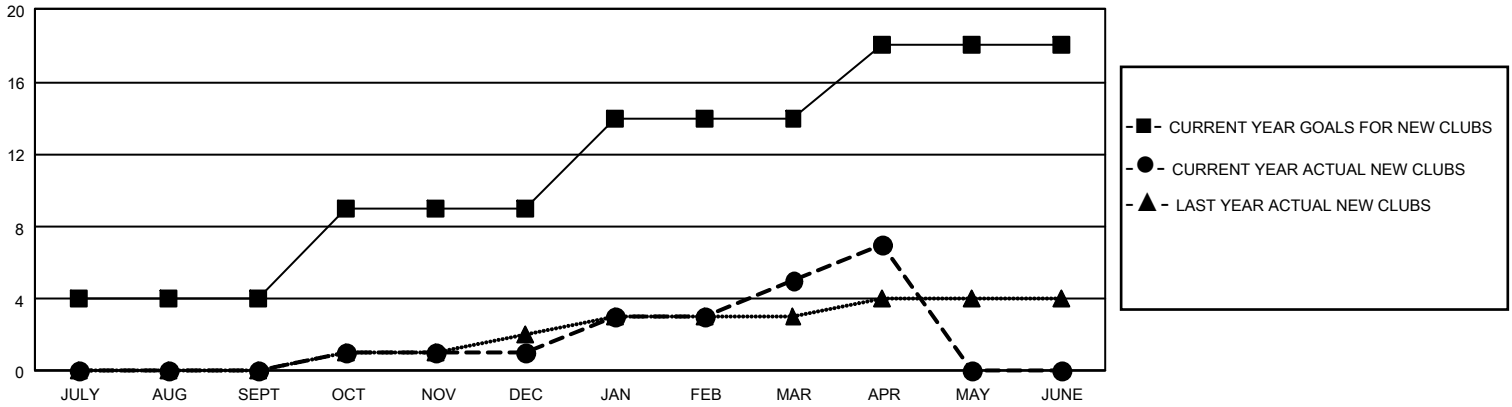
## GMT Constitutional Area 5 - J, Group H

REPORT DOES NOT INCLUDE CLUBS IN UNDISTRICTED AREAS.

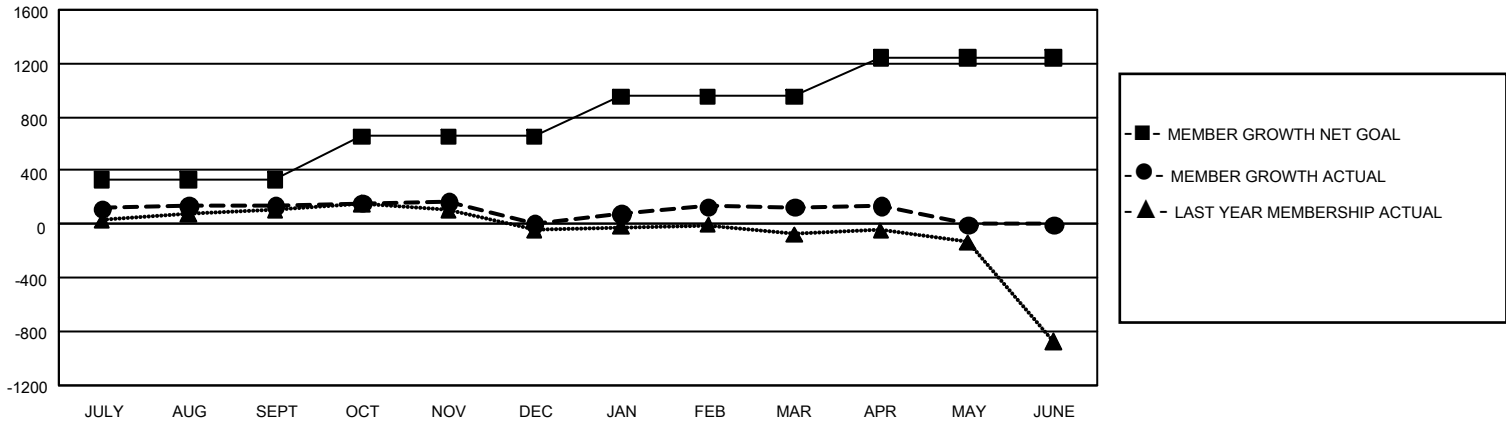
Clubs			
RESULTS FOR 2021-2022			
QUARTER	NEW CLUB GOAL	NEW CLUBS	DROPPED CLUBS
JULY/AUG/SEPT	12	0	0
OCT/NOV/DEC	15	1	4
JAN/FEB/MAR	15	4	2
APR/MAY/JUNE	12	2	0

Members			
RESULTS FOR 2021-2022			
QUARTER	MEMBER GROWTH NET GOAL	MEMBER GROWTH ACTUAL	DROPPED MEMBERS ACTUAL (including transfers)
JULY/AUG/SEPT	334	434	273
OCT/NOV/DEC	320	269	396
JAN/FEB/MAR	300	423	287
APR/MAY/JUNE	285	135	123

GOALS AND ACTUAL NEW CLUBS CUMULATIVE



GOALS AND ACTUAL MEMBERS CUMULATIVE



<b>DROPPED CLUBS: 6</b>	379 CLUBS OF 693 ADDED 1 OR MORE NEW MEMBERS	<b>GENDER DISTRIBUTION</b>	
		MALE 17,727 (74.52%) FEMALE 6,060 (25.48%) NON BINARY 0 (0.00%) PREFER NOT TO ANSWER 0 (0.00%)	
<b>DROPPED MEMBERS</b>		<a href="#">CLICK HERE FOR CUMULATIVE MEMBERSHIP DATA</a>	TOTAL FAMILY UNIT MEMBERS 9,400
DECEASED 149 CLUB CANCELLED 13 OTHER 917 <b>TOTAL 1,079</b>			FAMILY MEMBERS PAYING HALF DUES 5,226